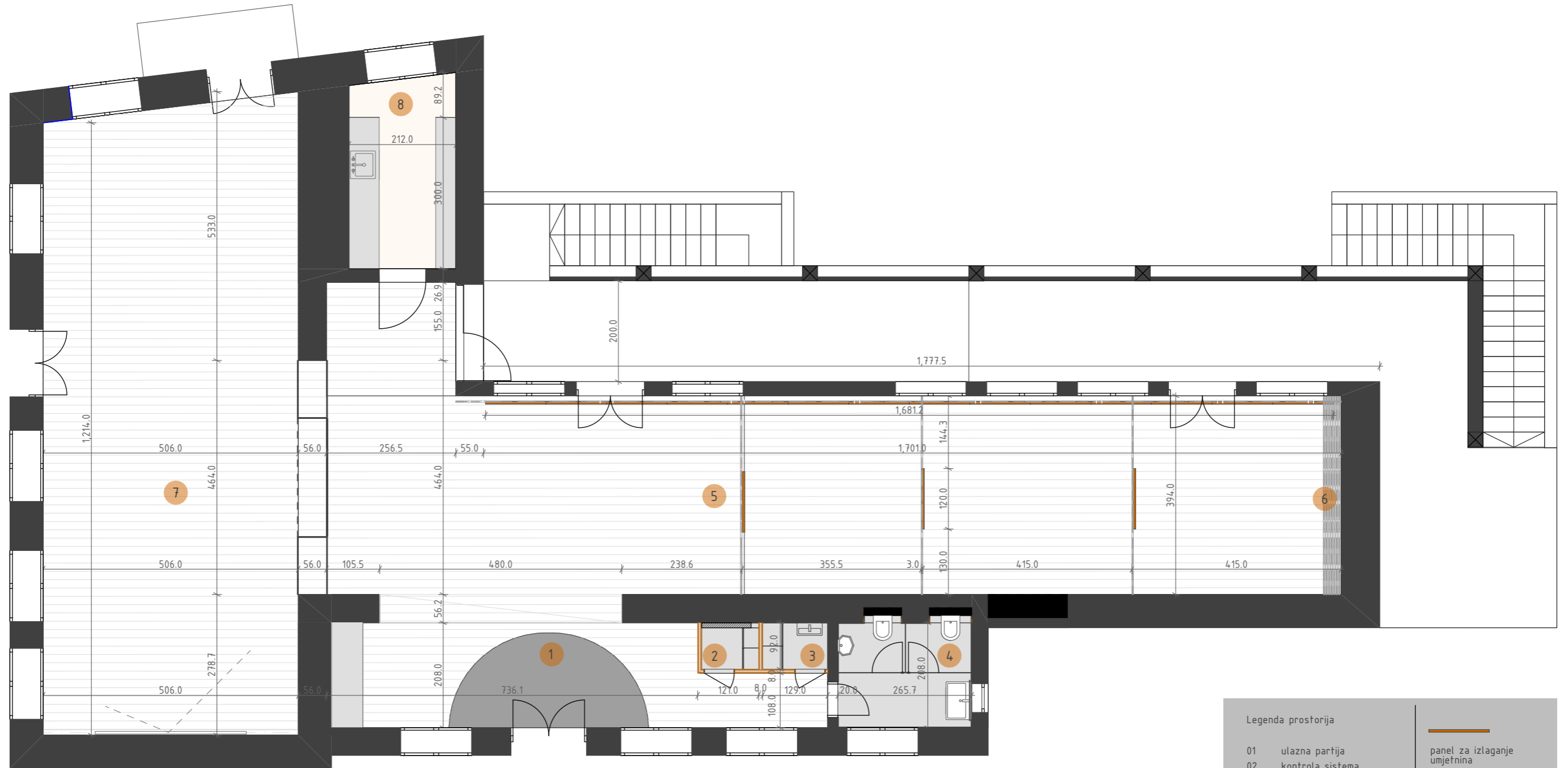




PROJEKAT ENTERIJERA KUSLEVOVE KUĆE
JU MUZEJI I GALERIJE PODGORICE

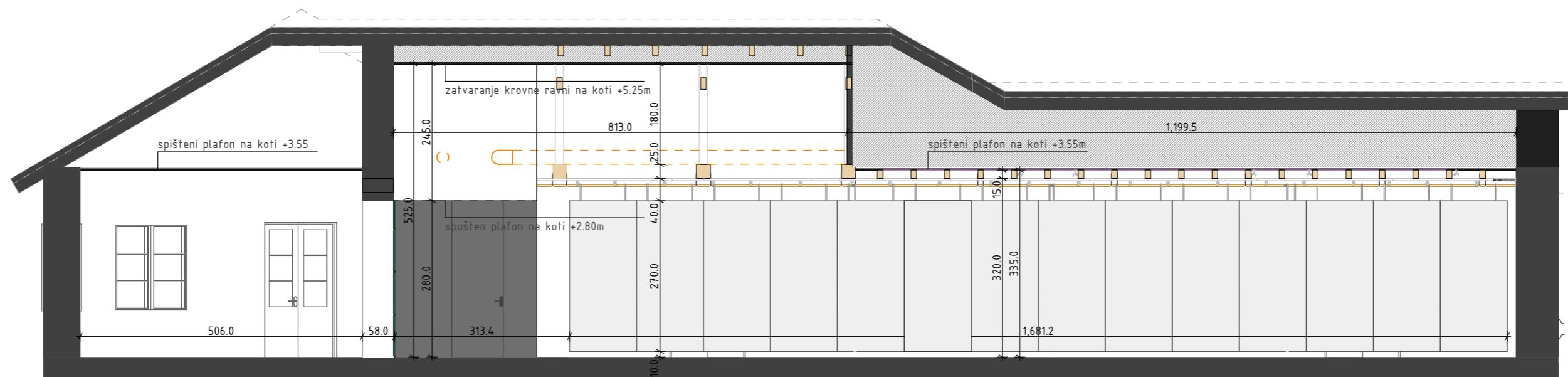




ulaz

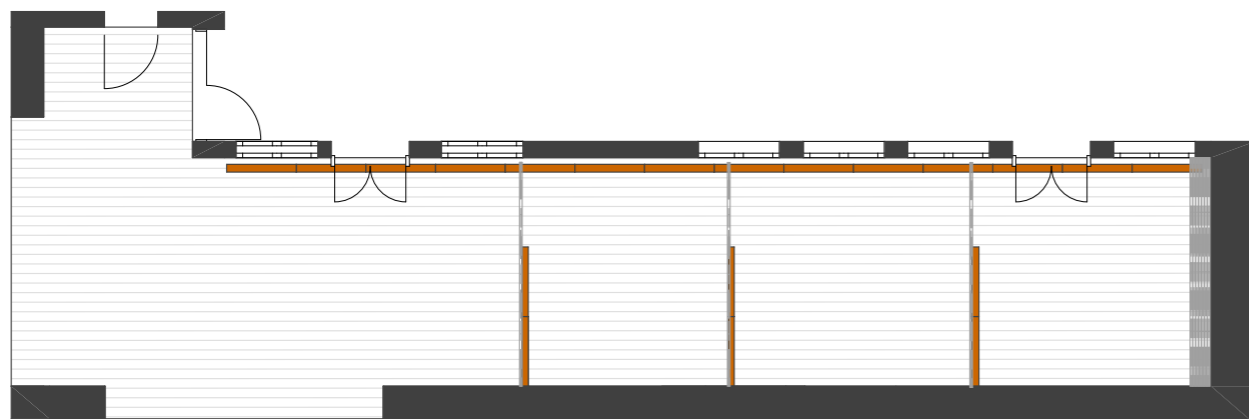
Legenda prostorija

01	ulazna partija		panel za izlaganje umjetnina
02	kontrola sistema		šine za kačenje panela
03	higijenčarska ostava		projektor
04	toaleti / muški i ženski /		
05	galerijski prostor		
06	skladištenje panela		
07	salon		
08	čajna kuhinja		

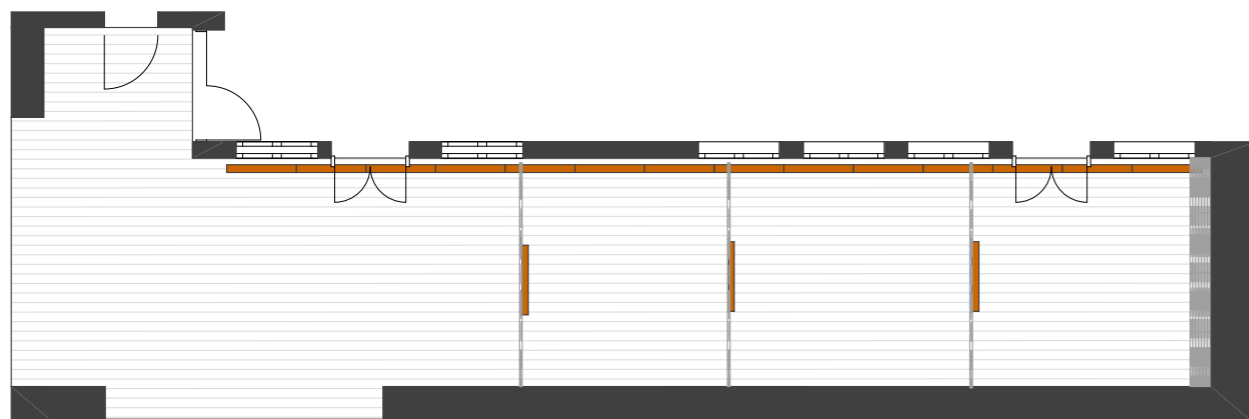


/ po dva panela bočno

POZICIJE PANELOVA



/ po jedan panel centralno postavljen



/ cik-cak sistem

